



**FOR EXCELLENCE  
IN FAÇADE DESIGN  
& ENGINEERING**

**The**  
**2024**  
**Awards Gala Dinner  
Programme**



**FOR EXCELLENCE  
IN FAÇADE DESIGN  
& ENGINEERING**

# **RUNNING ORDER**

- 6.30pm** Pre-Event Networking Reception
- 7.30pm** Dinner Hall Doors Open
- 7.45pm** Starters, Welcome Address, First Set of Awards
- 8.15pm** Main Course & Dessert
- 8.45pm** Entertainment & Second Set of Awards
- 9.15pm** End of Event & Post Event Networking
- 10.00pm** Carriages

## TITLE SPONSOR



By  Hydro

---

## CATEGORY SPONSORS



On behalf of the Zak Exhibitions & Conferences team, I would like to welcome you all to our first Zak Awards for Excellence in Façade Design & Engineering for the Middle East region, taking place at the Coca-Cola Arena.

Thank you for taking the time to attend this ceremony where we celebrate, recognize, and reward excellence and achievements in façade design & engineering. This event raises the profile of the façade discipline and highlights its importance.

In this inaugural year, we received close to 100 entries from organizations that have submitted their projects and products. Additionally, many organizations have nominated their young engineers for the Rising Façade Engineer of the Year Award. With your presence and support, you have made these Awards successful and recognized across the industry. We wish all the shortlisted entries the best of luck.

Furthermore, we encourage you all to nominate your future projects, people, and products for next year to gain recognition for your hard work among a hall full of façade enthusiasts.

We would also like to acknowledge the dedication, hard work, and personal commitment of our judges, who had the daunting task of reviewing the entries and selecting winners from the incredibly competitive submissions.

Finally, I would like to thank our title sponsor, Technal, and our Category Sponsors Effisus, Guardian Glass & Siderise for their support from the outset.

We hope you enjoy the evening.



Best Regards,

**Ahad Ahmed**

Director  
Zak Exhibitions & Conferences





# Awards Host



## Mina Liccione

Mina Liccione is a multi-award-winning performing artist, speaker and comedian hailing from New York. She's been seen on Broadway in the hit show STOMP, MTV's The Grind, Comedy Central, MBC's Stand-up Sketch Show, and her stand-up special as part of the Menna W Fena Series now streaming on Paramount+. Mina's highly acclaimed one-woman-show "Growing Up Ringside" received rave reviews in the USA, UK, Middle East as well as at the Edinburgh and Adelaide Fringe Festivals.

In 2008, she co-founded Dubomedy Arts with her husband Ali Al Sayed which is home to the Region's first Comedy School and all-female troupe; Funny Girls MENA. She's been coined "The UAE's Queen of Comedy" and is extremely passionate about using comedy as a tool to break negative stereotypes and bring together people from diverse backgrounds. The comedy duo also founded the Clowns Who Care Project which brings joy to Refugee Camps, Children's Hospitals and Centers.

# Jury

## 15 Industry Experts from the Façade Engineering World



### **Abdulmajid Karanouh**

**International Director & Global Head of Interdisciplinary Design Research, Drees & Sommer**

Dr. Karanouh is an established inter-disciplinary design innovation specialist in the built environment, with over 25 years' experience in integrating the principles of design, technology, and whole lifecycle among others. An advocate of the 'master builder' concept based on disciplines integration as opposed to standard coordination practice, Dr. Karanouh's core expertise lies in leading specialised project teams in developing and delivering context-inspired integrated innovative solutions. Dr. Karanouh is currently the International Director and Global Head of Interdisciplinary Design Research at Drees & Sommer.



### **Ahmed Abdulla Al Salami**

**Principal Building Studies Specialist, Dubai Municipality**

Ahmad Alsalami has a diverse work experience that spans over several years. He started his career as a Mechanical Project Engineer at Dubai Aluminium Company and then worked as the Owner of Breath and Health Alternative Medical Center LLC, focusing on guiding people towards mindful health. In 2007, Ahmad became the Company Owner of Majesty for Properties LLC, a real estate company providing integrated real estate products and services. He then joined Dubai Municipality in March 2008 and is currently the Principal Building Studies Specialist there. He leads the Research and Building Systems Section, where he applies his mechanical engineering skills and knowledge to develop and improve the Dubai building codes and standards in the city.



### **Alistair Lathe**

**Design Director, Jacobs**

Alistair is a multi-licensed Architect with an international career spanning more than 30 years across Europe, Asia and the Middle East. With a broad focus ranging from master planning concepts to curtain wall detailing, Alistair has been responsible for leading diverse multi-disciplinary consultant teams on significant projects, with key expertise in high-rise building design having had design and technical responsibility on several supertall projects in the Far East. Alistair possesses an in-depth knowledge of exterior wall design, and is working at the forefront of digital design, directing teams utilising advanced parametric software.



## Andy Shaw

**Chair of RIBA Gulf Chapter Managing Partner, AMA**

Andy Shaw RIBA is an architect based in Dubai. He is the Managing Partner at AMA ([www.ama.design](http://www.ama.design)). AMA is a boutique design studio, designers of the landmark 'Yacht Club' in Dubai Harbour, the Nobu Hotel and Residences in the Saadiyat, Abu Dhabi, and over 1700 homes for the Abu Dhabi Housing Authority. He is currently working on new hotel resorts and housing communities in the UAE.

Andy is passionate about how combining innovative technology and sustainable design can improve the built environment for all citizens, whilst addressing the emerging climate emergency.



## Anna Wendt

**Partner, Buro Happold**

After completing a degree in Architectural Engineering Anna joined the Façade Engineering team at BuroHappold in 2007. Anna is a Partner and Global Discipline Director of Façade Engineering at Buro Happold and a Fellow of the Chartered Institute of Building Services Engineers. Her focus is on interdisciplinary project delivery, extending her deep technical façade expertise to bring together a range of highly specialist engineering disciplines such as Acoustics, Fire, Security, Lighting, Technology, Inclusive Design and Sustainability. Anna is passionate and focused on maximising the opportunities within the building fabric to ensure an empathetic, climate conscious approach is taken to building design incorporating practical solutions to measuring embodied and operational carbon ultimately aiming to deliver resilient net-zero carbon solutions for the built environment.



## Darryl Custer

**Managing Director, KEO Design**

Darryl has over 34 years of global design and management leadership experience and is a global expert in large planning projects and commercial urban mixed-use developments.

As the Managing Director of the Design division, Darryl is responsible for bringing excellence to KEO and the Design division and all its associated disciplines, from early concept designs to final construction documents. He is also a member of KEO's Executive Leadership Management Board.





## **Dr. Harpreet Seth**

**Head of Architecture, Heriot-Watt University Dubai**

Harpreet Seth, Associate Professor, is the Head of Architecture and Director of Studies in the School of Energy, Geoscience, Infrastructure and Society (EGIS) at Heriot-Watt University Dubai (HWUD). She played an instrumental role in establishing the Architecture programme at HWUD, a RIBA Part 1 candidate course. Her current role is characterized by a strong commitment to a distinctive pedagogy that addresses current and future challenges through design and critical thinking in architectural education internationally and within the MENA region.



## **Dr. James O'Callaghan**

**Founding Director, Eckersley O'Callaghan**

James is a structural and facade engineer with over 20 years of experience. Widely acknowledged as an authority on structural glass, he is perhaps best known for his highly innovative designs for glass envelopes, stairs, bridges and other structural elements in Apple's iconic retail stores around the world.

He co-founded Eckersley O'Callaghan in 2004, his ongoing interest in the development of structural glass design has led to the firm's involvement with many challenging and award-winning glass projects around the world. This was recognised in 2010 when the practice won the Queen's Award for Enterprise in the category of Innovation.



## **Jason Carlow**

**Associate Professor & Head of the Department of Architecture,  
College of Architecture, Art & Design, American University of Sharjah**

Jason Carlow is Associate Professor and Head of the Department of Architecture at American University of Sharjah. He holds a BA in Visual and Environmental Studies from Harvard University and a Master of Architecture from Yale University. Prior to joining the faculty at AUS in 2016, he taught architecture at multiple institutions including the University of Hong Kong, Parsons School of Design in New York and the Yale School of Architecture. His current research and teaching themes include façade systems for desert climates, high-rise housing and dense urban environments. He is co-author of the forthcoming book, *Cities of Repetition: Hong Kong's Privately Developed Housing Estates* (AR+D Publications 2024).





## John Downes

Global Head of Façades, Lendlease

John Downes is the Global Head of Facades for Lendlease. He has 30 + years' experience in the façade, construction and real estate development industry.

John holds an MSc Façade Engineering from the University of Bath and is a board director of the CWCT (Centre for Window and Cladding Technology). He also sits on the CWCT technical standards committee and is a fellow of the Society of Façade Engineers (SFE).of the CWCT strategic committee on Sustainability.



## Mark Powell Kyffin

Architecture Head, Department of Culture and Tourism Abu Dhabi

Mark is the Head of Architecture for Abu Dhabi's Department of Culture & Tourism. He is a past Branch President and longstanding member of the Royal Institute of British Architects and a former member of the Institute of Historic Building Conservators.

The works which Mark has undertaken, have been recognised by UNESCO as being an exemplar approach to rehabilitating a World Heritage Site. He is delighted to have been recognised by his peers for these works which obtained a High Commendation in the 'Mies van der Rohe' award at the World Architecture Festival, in Barcelona 2008 and for the Qasr Al Hosn Musalla to be recognised as the best Religious building at the World Architecture Festival Awards in Amsterdam 2019.



## Mathieu Meur

Director, DP Façade

Mathieu Meur provides strategic and technical leadership as the director of DP Façade, a leading façade consultancy practice with global projects. Through his training as a multi-disciplinary engineer, and subsequent years of experience heading the largest façade consultancy practice in the world, Mathieu has developed extensive knowledge of all types of building envelope systems, their design, engineering, and related codes of practice. Mathieu has worked on numerous major construction projects on five continents, including Changi Airport in Singapore, The Dubai Mall, New Lima Airport and 145 City Road in London.



## **Nicky Dobreanu**

**Branch Director, Omnium International**

Nicky Dobreanu is a seasoned professional working with Omnium International, a distinguished RICS regulated firm with a global footprint spanning the Middle East and Europe through five branch offices. Armed with a Master's Degree in Civil Engineering, a Bachelor's Degree in Commercial Management, and a PgCert in International Arbitration, Nicky is a Fellow of the Royal Institution of Chartered Surveyors (RICS) and a Member of the RICS UAE Regional Advisory Board.



## **Paolo Rossi**

**Design Director, Pace Architecture & Engineering + Planning**

Paolo Rossi, ARB, RIBA, OAR, is a Pace Architecture, Kuwait Design Director. With 20 years of experience realising visionary award-winning designs worldwide, with Pace has won the WAN gold medal as the best project and the AIA Middle East honorable mention with the Schools of the Future in Kuwait. Paolo has studied at the "La Sapienza" Architecture University of Rome. His projects have included JW Marriot in Kuwait, the RETAL Mosque in Saudi, and the Kuwait Digital Campus. His work was presented in numerous architectural exhibits, including the "Venice Architecture Biennale" in 2008 and 2023. Since 2005, his cooperation with such firms as n! studio and SOM has been published in important magazines and architectural catalogues.



## **Sherif W Anis**

**Executive Director, AIA Middle East**

Sherif is an architect and development management director with over three decades of diverse experience spanning the USA, UK and the GCC. Since 2007 Sherif has been actively involved in transformative projects across the UAE and Saudi Arabia. With a keen focus on design and design management, Sherif has a proven track record of developing innovative, cost-effective designs in architecture, interior design, and urban planning. His high-profile project portfolio consists of large, mixed-use commercial/residential projects, corporate headquarters, hotels, university campuses and buildings, extensive multi-use developments, major educational projects, and contemporary residences; all of which incorporate qualities that make projects successful, attractive, sustainable, and livable.

# 1

## Excellence in Façade Sustainability

### Shortlisted Nominees

Category Sponsor:  
**TECHNAL®**  
Hydro



**Buro Happold**  
for Bee'ah HQ, Sharjah



**Dorsch Gruppe**  
for LLFP Meydan School, Dubai



**Empereal Energy and Services**  
for Sustainable Facades at Dubai Expo 2020



**Grimshaw + PCT**  
for Dubai Expo Energy Trees



**Terraco + Morals General Contracting**  
for Reem Mall, Abu Dhabi



# 2

## Outstanding Application of Glass

### Shortlisted Nominees

Category Sponsor:  
**GUARDIAN  
GLASS**  
See what's possible



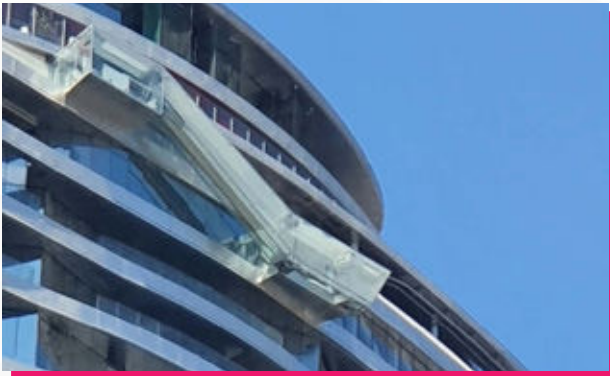
#### **Arup + Investment Corporation of Dubai + Kerzner International**

for Alight and Deluge at Atlantis the Royal, Dubai



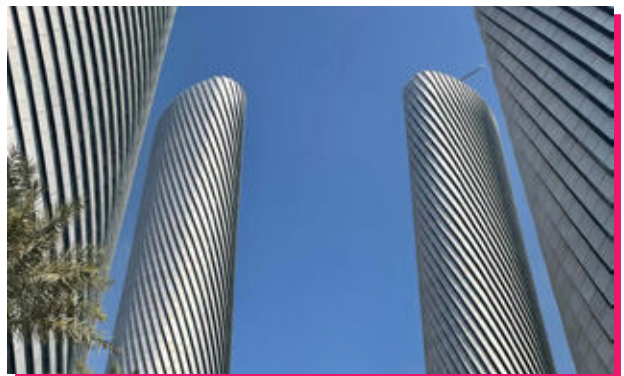
#### **Captivision + Chapman Taylor**

for The View Hospital, Doha



#### **Koltay Façades + Lindner Glass and Steel**

for Glass Slide at Sky Views, Dubai



#### **Tianjin NorthGlass + Alutec Qatar**

Lusail Towers



# 3

## Excellence in Façade Execution - Small

### Shortlisted Nominees



**Al Fanous Glazing**  
for 8 Fairways, Dubai



**Leaders Fort Contracting**  
for The Makers District, Abu Dhabi



**Mathews Metal Manufacturing**  
for Avenue Mall Mirdif, Dubai

# 4

## Excellence in Façade Execution - Medium

### Shortlisted Nominees



**AFFAN Innovative Structures**  
for Museum of The Future, Dubai



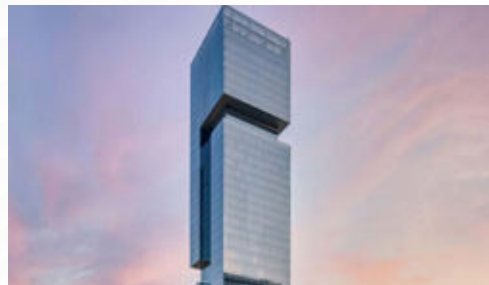
**AG Façades**  
for Mashreq Bank Headquarters, Dubai



**Alumetal**  
for Hyde Hotel, Dubai



**Cube Metal Industries**  
for Aramco Innovation Center, Dammam



**Siraj International Aluminium & Glass**  
for The First Collection at  
Jumeirah Village Circle, Dubai



# 5

## Excellence in Façade Innovation - Product

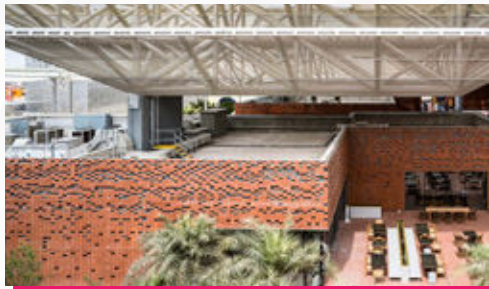
### Shortlisted Nominees



**Axalta Architectural Coatings**  
for Plascoat



**Effisus**  
for ProFlex FR



**Flexbrick**  
for Hanging Flexible System



**Schüco Middle East**  
for Grid2Shell



**Priedemann Façade Experts**  
for ADAPTEX



**Tecfire Group**  
for CLARIO

# 6

## Façade Project of the Year - Developer/Contractor

### Shortlisted Nominees

Category Sponsor:  
**EFFISIUS**  
Excellence in Weatherproofing



**Al Sahel Contracting Company**  
for AAAID Headquarters, Dubai



**DAMAC Properties**  
for Paramount Tower Hotel & Residences, Dubai



**DMCC**  
for Dubai Uptown Tower



# 7

## Remarkable Façade Bringing Paradigm Shift



This honorary category is set to recognize a façade project that stands out not just for its aesthetic appeal or technical proficiency, but for fundamentally changing the approach to façade design and engineering. It celebrates the project for having introduced groundbreaking concepts or technologies, shifting the traditional paradigms in the industry. The focus is on innovative designs that challenge conventional norms, incorporate sustainable practices, or utilize materials and methods in novel ways, thereby setting new benchmarks for future projects in façade architecture.



# 8

## Rising Façade Engineer of the Year

Shortlisted Nominees

Category Sponsor:  
**SIDERISE**  
*integrity in all we do*



**Amr Ibrahim**  
of WSP



**Alicja Kurzajewska**  
of AESG



**Saif Sunna**  
of Koltay Façades



**Ghina Yamak**  
of Zutari



**Kirankumar Valappil**  
of Permasteelisa



**Eugene Paul Austria**  
of Meinhardt Façade Technology

# 9

## Outstanding Contribution to the Façade Industry

Category Sponsor:



**TECHNAL®**

by Hydro

— •

This honorary award recognizes an individual whose lifetime contributions have profoundly shaped the field of façade design and engineering in the Middle East, leaving an indelible mark on the industry's landscape in the region.

• —

# 10

## Excellence in Façade Innovation - Project Shortlisted Nominees



**Arup + Masdar City +  
Airshade + Metadecor**  
for Masdar City, Abu Dhabi



**Buro Happold**  
for Museum of the Future, Dubai



**CoxGomyl**  
for Uptown Dubai Tower



**Eumada**  
for Como Residence, Dubai



**Guardian Glass**  
for Museum of The Future, Dubai



**Technal**  
for Lusail Plaza Towers



**Gutmann Middle East**  
for Doha Oasis



# 11

## Excellence in Façade Design - Architect

### Shortlisted Nominees



**AGi Architects**  
for Wafra Living, Kuwait



**DP Architects**  
for Lusail Commercial Boulevard



**Foster + Partners**  
for House of Wisdom, Sharjah



**Pace**  
for The New Palace of Justice, Kuwait



**Skidmore, Owings & Merrill (SOM)**  
for Kuwait University Administration Facilities,  
Sabah Al Salem University City



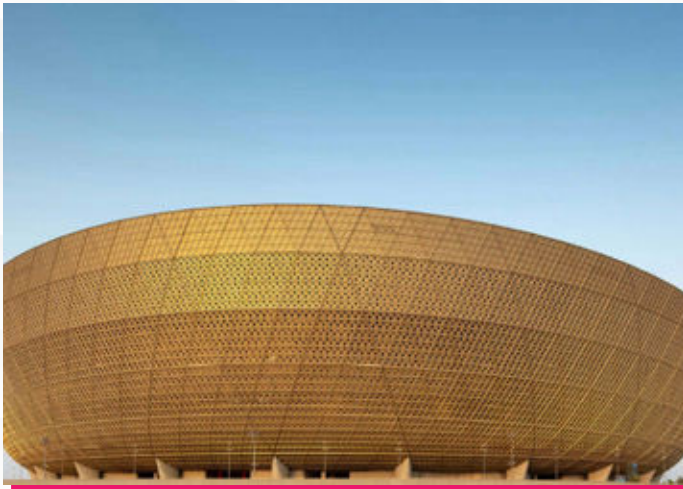
**Yazdani Studio - CannonDesign**  
for Address Harbour Point Towers, Dubai

# 12

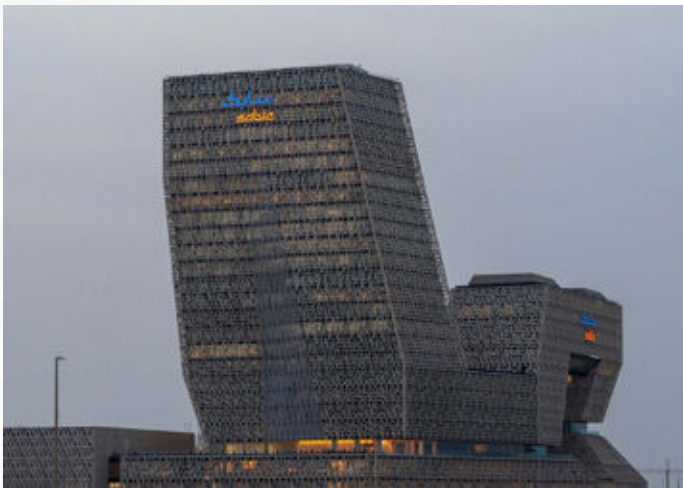
## Excellence in Façade Execution - Large Shortlisted Nominees



**Al Abbar Aluminium**  
for ICD Brookfield Place, Dubai



**Alutec Qatar**  
for Lusail Stadium



**Reem Emirates Aluminium**  
for SABIC Headquarters, Jubail



# 13

## Façade Engineering Firm of the Year - Consultant

Category Sponsor:  
**TECHNAL®**  
Hydro

### Shortlisted Nominees



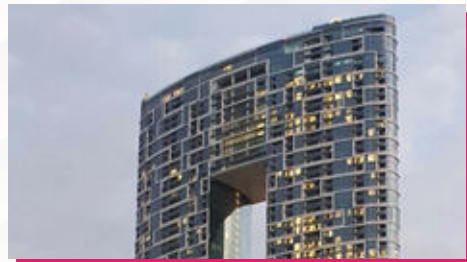
**BG&E Façade Consultants**  
for Al Bayt Stadium, Al Khor



**DAR International**  
for Specialized Medical Center 2, Riyadh



**IBECE Façade Engineering Consultants**  
for SABIC Headquarters, Jubail



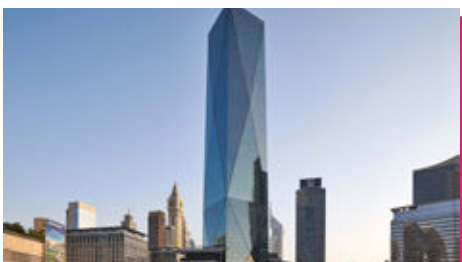
**Koltay Façades**  
for Address Beach Resort, Dubai



**Maffeis Engineering**  
for Dubai Harbour Cruise Terminal



**Meinhardt Façade Technology**  
for One at Palm Jumeirah, Dubai



**Priedemann Facade Experts**  
for ICD Brookfield Place, Dubai



**Ramboll Middle East**  
for The Makers District, Abu Dhabi



# NEAR ZERO CARBON FOOTPRINT

## 100% END-OF-LIFE ALUMINIUM FOR WINDOWS, DOORS AND FAÇADES

Hydro  
**CIRCAL®**  
Recycled  
Aluminium

### Decarbonising beyond limits with near zero CO<sub>2</sub> footprint\* aluminium systems.

We innovate BEYOND limits. As part of Hydro, we are the first aluminium building system company able to produce profiles from 100% end-of-life aluminium – Hydro CIRCAL 100R. It is now possible to provide architectural solutions with near zero carbon footprint (\*only 0.5kg of CO<sub>2</sub>e / kg of aluminium).

Together, we can contribute to decarbonizing Building & Construction sector.

IMAGINE WHAT'S NEXT

[CLICK TO KNOW MORE](#)



[Windows](#) [Doors](#) [Façades](#) [Pergolas](#)

[www.technal-me.com](http://www.technal-me.com)



By  Hydro



# BUILDING FAÇADES THAT SHAPE THE FUTURE



Architect: Foster Partners Photographer: Almar At Naj

## TECHNAL® – Your Partner in Pioneering Façade Solutions.

Achieve the extraordinary with Technal's innovative façade solutions. We specialize in transforming your visions into technical excellence. Our collaborative approach ensures seamless integration of cutting-edge aesthetics and functionality. With a focus on innovation, our state-of-the-art systems deliver sustainability, efficiency, and bespoke beauty tailored to modern architectural needs.

### IMAGINE WHAT'S NEXT

[CLICK TO KNOW MORE](#) ➤

➤ [Windows](#) ➤ [Doors](#) ➤ [Façades](#) ➤ [Pergolas](#)



By  Hydro

[www.technal-me.com](http://www.technal-me.com)

# MENU

## STARTER

- Tomato Burrata Salad (V)
- Heirloom Tomato, Local Burrata Cheese, Zatar Leaves, Olive Oil Pearls, Pomegranate Dressing

## MAIN

- Free Range Chicken Breast
- Creamy Potato with Truffle and Macedoine Vegetables, Herb Jus

## VEGETARIAN OPTION

- Wood Roast Mushrooms
- Wood Roasted Portabella Mushrooms, Crispy Polenta, Salsa Verde, Crème Fraiche, Confit Tomato

## DESSERT

- Black Forest Cheesecake (V)
- Madagascan Vanilla Cream Cheese, Poached Sour Cherries, Shaved Dark Chocolate, Chocolate Sponge, Cherry Gel, Chantilly Cream





Join us on  
**24<sup>th</sup> April**  
**2024**

[www.zakawards.com](http://www.zakawards.com)

f@in/zakawards | #zakawards